

NewsLetter

Business and Economy

Issue no. 7

Great Bend
ECONOMIC DEVELOPMENT
A Barton County Partnership for Growth
www.gbenedinc.com



MEET OUR PRESIDENT



Sara Arnberger is a native of Great Bend, Kansas and located back to the area to pursue the opportunities with economic development. Sara comes to Great Bend Economic Development with a bachelors degree from Friends University and close to 10 years of experience in management and customer service. Her experience combined with her passion for the area is sure to spur new growth.

COMMS DIRECTOR



I'm GBED's Communications Director, Lee Ann June. As a longtime local with a love for community, I am excited to join forces with GBED to promote and grow Great Bend. I bring a comprehensive set of skills that I believe will be valuable to this organization. Sharpening my skills in marketing, planning, and communication at the Great Bend Chamber of Commerce, I am delighted to contribute my talents towards GBED efforts. Mother of two, former business-owner/instructor, creative; I bring a unique perspective to this position. I'm motivated by the momentum and invested in seeing the Great Bend area thrive.

GBED receives an award from Kansas Department of Commerce at their 2022 *To the Stars: Business Awards Banquet*

On October 20, 2022, the Kansas Department of Commerce held its annual To the Stars: Kansas Business Awards banquet in Topeka. Great Bend Economic Development was nominated and won the North Central Region in the category, Apprenticeship Champions and Partners. Nominated by Lana Gordon, Kansas Grant Manager for Hamilton-Ryker TalentGro division, this award is given to companies that excel in providing registered apprenticeship programs in Kansas. Sara Arnberger, GBED's President, exemplifies this award as she has and continues to connect businesses with the resources they need to create apprenticeship programs. In making these connections, Hamilton-Ryker assisted KMW Loaders, one of Great Bend's manufacturers, in creating an apprenticeship program. The KMW Learning Academy began its inaugural class with a full roster and a waiting list for those not able to begin in September.

to the stars
**KANSAS
BUSINESS
AWARDS**



Lana Gordon said, "Sara has a unique understanding of how to create a network of business leaders, the local workforce board, the City of Great Bend, County, Community Colleges, the High School, and other community leaders to create a meaningful pipeline to promote the apprenticeship model. Sara has joined forces with Hamilton Ryker's TalentGro Division, one of the Intermediaries for the Kansas SAEI apprenticeship grant to assist with building collaboration to support the region's businesses in their quest to attract, train and retain their workforce."

Craig VanWey, In-State Business Development Manager, said that the To the Stars awards allow the Kansas Department of Commerce the ability to highlight some of the success stories taking place in all parts of Kansas. Accepting the award in Topeka was Lee Ann June, GBED's Communications Director, as Sara Arnberger, GBED President was on her honeymoon. Upon her return to the office and hearing of the award, Sara said, "It's such an honor to be recognized for our work on apprenticeships. We at GBED



Lieutenant Governor David Tolan poses with Lee Ann June, GBED Communications Director, after presenting GBED with the award.

believe that apprenticeships have an integral role to create a thriving workforce in Barton County."

Apprenticeships are generally regarded as a positive program to help workers gain experience and knowledge; they need to be hireable members of the workforce. To learn more about apprenticeship programs, please contact GBED via email at marketing@gbedinc.com or by calling 620-796-2407.

To get more information or find out how APPRENTICESHIPS may benefit your company contact us [HERE](#)

Do you have questions for GBED?

Submit questions [here](#) or by emailing marketing@gbedinc.com



We are bringing back Sara's Asked & Answered. This video series came about to help the community understand what Great Bend Economic Development is working on and how businesses can utilize resources in the area. Submit your questions via email, post on the link above, or by calling 620-796-2407.



HAUNTED

Friday on Forest

Presented by GB Alive!

GB Alive is GBED's downtown development arm and we are committed to, not only Fridays on Forest, but many other downtown development initiatives to come.

Fridays on Forest run the final Friday of each month from April - November. Fridays on Forest is winding down for the season, but that doesn't mean the fun is. Plans are coming together for NEW additions for November's Friday on Forest (Nov. 25).

Pictured to the left are some of the costumes from HAUNTED Friday on Forest. We had fun getting folks geared up for Halloween with a night filled with music, food, fun, and friendship. Thank you to those that participated, and if you missed it, we will see you at the next and final Friday on Forest of the 2022 season.

The final Friday on Forest will be

full of holiday cheer, including a snowball drop for discounts and prizes, carolers, and a visit from the big guy.

November 25th

Food Vendors:

- Flatlanders
- Lumpy's
- Los Dos Potrillos

Alcohol Vendors:

- Dry Lake Brewing
- Lumpy's
- Los Dos Potrillos
- The Wolf Hotel

We will welcome Fridays on Forest back on April 28, 2023. If your organization or business would like to participate, volunteer, or sponsor one of those events, please reach out to GBED staff, email marketing@gbedinc.com or call 620-796-2407.



Watch our latest TikTok



For the latest updates follow Great Bend Alive on:

Facebook Instagram TikTok GBEDinc.com/gbalive



Congratulations to the newlyweds

October 12th, Curtis Arnberger and Sara Hayden were married in Gruene, Texas with a small group of family and friends. The Arnbergers came back to Great Bend for their hometown reception and the "Banger in the Hangar". The beautiful fall evening celebrated the newlyweds in the B-29 hangar at the Great Bend Airport. Congratulations again to the happy couple! #AdventuresofArnbergers

CONGRATULATIONS



Mr & Mrs Arnberger

New Updates to the Brush Up Program!

Visit our page [HERE](#) to learn more!



Brush Up BC
AN EXTERIOR HOME ASSISTANCE PROGRAM

READY. SET. RENOVATE!

Are you ready for an exterior makeover? Let Great Bend Economic Development pay for the paint to make your curb appeal plans come to life! Eligibility and process can be found on the back side of this postcard or on www.gbenedinc.com/housing.

Phone: 620 796 2407

Our Location:
3111 10th Street
Great Bend, KS 67530

www.gbenedinc.com/housing
director@gbenedinc.com



Brush Up BC
AN EXTERIOR HOME ASSISTANCE PROGRAM

MEET OUR SPONSORS:

Great Bend
ECONOMIC DEVELOPMENT
CITY OF GREAT BEND, KS

TROY'S COLOR CLINIC
PORTER
PAINTS

APPLICATION AND ELIGIBILITY

- Applicants must own and have their primary residence in the property for which they are applying for assistance
- Applicants must be current on property taxes
- Fill out an application at www.gbenedinc.com/housing

PROCESS AND TIMELINE

- Applicant will turn in completed application
- If approved, staff will assess the home, take pictures and purchase paint and supplies within 30 days of received application (volunteer availability may affect this timeline)
- Once painting is complete staff will assess the home and take pictures

CALL THE EXPERTS

Please email us at director@gbenedinc.com to get recommendations for professional painters to help with your project!

Looking for Volunteer Opportunities?



Brush Up Barton County currently has two projects waiting for volunteers to complete. Barton County residents eligible for the program but unable to perform the duties are seeking volunteers to assist them in completing the task.

Are you an individual interested in helping? Or is your organization looking for a service project? How will you help? If you are ready to help or need more information, please reach out via email marketing@gbenedinc.com or by calling 620-796-2407.

Thinking Big

BARTON COUNTY
YOUTH ENTREPRENEURSHIP CHALLENGE



The 3rd Annual Barton County Youth Entrepreneurship Challenge is coming March 8, 2023. We are looking for 9th grade to 12th grade Entrepreneurs, Teacher Champions, and Business Mentors.

Students are competing for cash prizes and can go on to compete at the state level.

High school students in Barton

County, 9th Grade through 12th Grade, compete for cash prizes while learning how to write a business plan, present their product or idea, and, answer questions from judges.

Teacher Champions are also needed to help the students gather the right information and anticipate questions from the judges.

The Business Mentors are needed

for the practical application of the student entrepreneurs' idea or product. These business Mentors help shape the next generation to think big.

How will you help? If you are interested in participating in our next competition in some way, please reach out via email marketing@gbedinc.com or by calling 620-796-2407.

Historic Downtown

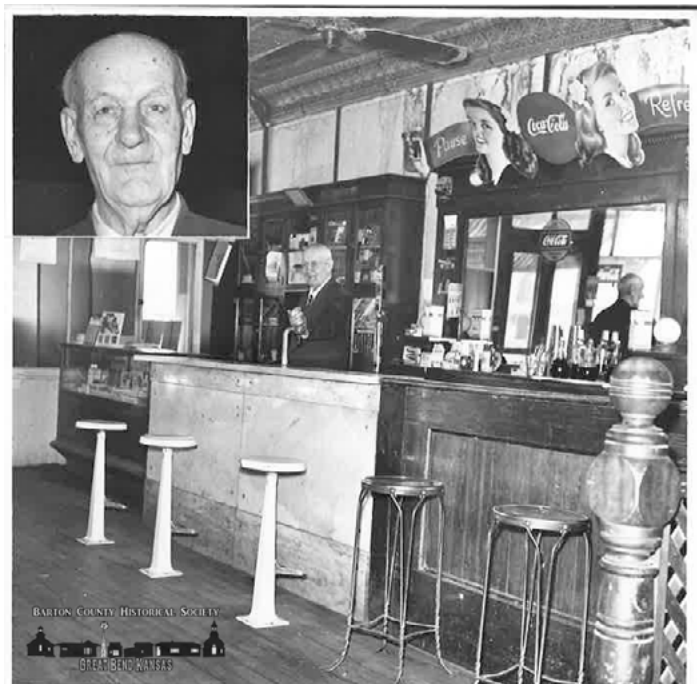
Did you know, Great Bend is finally getting our historic downtown district recognized! What does that mean you ask? Many exciting opportunities!

Property owners that are in the downtown corridor will now be able to take advantage of up to 50% of project costs back in tax credits as well as apply for historic preservation grant programs through the state and federal government.

This designation will also lead to some exciting projects that will enable us to recognize our history and bring it to people in a modern and easy to use way.

As we continue down this historic path, we'll be looking forward to sharing with you other opportunities that may arise.

If you own a property in downtown Great Bend, be sure to check out our [downtown development](#) page for more information such as:



National Register Basics
Myths and Misconceptions
Tax Credit Info.
Historic Grants Info.

www.gbedinc.com

New Business Highlight: **Quick & Right Roofing LLC**

2nd Generation in Roofing Business

"Our logo represents my father working and our name represents the model we want to give our community. We are a company the community can trust."

Briefly tell us about yourself

Hello, I am Venessa Favela the partner/manager of Quick & Right Roofing, LLC. Raised in Mexico, I moved to the USA at the age of 14 years old. I was a freshman in high school with no knowledge of the language and culture. Through the years my father has been my inspiration. He has shown me what a great role model of



"To us, our customers are not only part of our community but part of our family. Family is our number one priority and we want to be there for your family on a Quick manner giving you a Right work ethic"



a hardworking and honest person can be. My parents have supported

me all along the way. My father made sure to give my siblings what he didn't have throughout his life, most of all an education. I'm the first generation with a college degree and my siblings are working their way toward degrees as well! I have been in the medical field for close to 8 yrs. Working for Great Bend Regional/University of Kansas Health Systems, USD 428 at GBHS/Park, and Barton County Health Department.

After working, God had placed an urgent desire to make a big step of faith and jump in alongside my father. Now helping him accomplish one of his dreams, just as he has done for me along the way. In April 2022, I decided to go all in and give back to the man who has given me the most. Paying him back for the education he has given me and using those skills to help him build his roofing business.

Tell us about your business

My father, Gabino Favela, plays the main part in all of this and has been in the

roofing industry for over 35 years.. So as a family we decided to help my father to do more on what he knows best... roofs! Our logo represents my father working and our name represents the model we want to give our community. We are a company the community can trust.

To us, our customers are not only part of our community but part of our family. Family is our number one priority and we want to be there for your family on a Quick manner giving you a Right work ethic. Through the years my father has seen it all, and have come across so many unacceptable jobs and his number one priority is to do it right from the first place to protect you and your family.

Why did you choose to locate your business in Great Bend?

Great Bend has been our home since we left Mexico back in 2009. We love to be in Kansas and right in the middle of the state. We love and care for our community.

What inspired you to start your business?

Seeing how hardworking my father is and how much he

Entrepreneurship Resources with Great Bend Economic Development

Entrepreneurs are the key to success in rural communities. If you have interest in creating a business, reach out to us today for help with business planning, financial analysis and access to start up loan funding. Great Bend Economic Development partners with many experts in the entrepreneurship field to bring you all the resources you need to get started successfully.



Learn more about Quick & Right Roofing [HERE](#)

www.gbedinc.com



“All I cared about was I needed a phone number for people to call. My dad and his crew do the real work. I was writing contracts and estimates from my phone in my car or from my kitchen table”

loves what he does inspires me. How caring he is with all details making sure a job is well done.

What did your startup plan and timeline look like?

In the beginning, I honestly had no idea what I was doing. All I cared about was I needed a phone number for people to call. My dad and his crew do the real work. I was writing contracts and estimates from my phone in my car or from my kitchen table. Now I have lots of knowledge after studying this industry and attending roofing conferences. I sold my first roof to a friend who bought a house to remodel, and that's how it all started.

Sales have been by word of mouth. Now we are proud to say that we have a billboard on north 281 Hwy, a company car with logos on the side for promotion, yard signs for job sites, and we are excited to announce we have bought an office space. We are also proud members of our local Chamber of Commerce!

If you could share any positive feedback to another company hoping to open in the Great Bend market, what would it be?

Stay humble and be positive, build relationships with everyone as your community plays a big part. Do not give up, all dreams do come true if we work hard for them and if you are ever at a position to give, give back to you community! The bigger blessing come when we pour out to others.



Anything else you'd like to share about your business experience thus far?

This has been the most exciting year, going from one field to another that is totally out of my comfort zone. But as long as we keep God the center of our business and on everything we do, we believe we will see the blessings. Matthew 6:33 We are walking this journey trusting God with our business on every step and trusting that he would use us to bless our community and our families.

Quick & Right Roofing LLC

Venessa Favela (partner/ manager)
1500 10th St. | Great Bend, Kansas 67530
quickandrightroofing@gmail.com

PHONE: (620) 282-0955

[Website Link](#)

Hours

Monday - Thursday: 9:00am-6:00pm
Friday: 9:00am-4:30pm
Saturday & Sunday - Closed

Did You Know?



How about some spending pattern facts?!

STI: Spending Patterns Food: Other Food at Home (Annual)	Walmart 0-5 min				Walmart 0-10 min				Walmart 0-20 min			
	Aggregate Expenditure Estimate	%	Average per Household	Market Index to USA	Aggregate Expenditure Estimate	%	Average per Household	Market Index to USA	Aggregate Expenditure Estimate	%	Average per Household	Market Index to USA
Sugar and other sweets	\$ 597,871	9%	\$ 144.13	80	\$ 1,030,022	9%	\$ 149.80	83	\$ 1,515,047	9%	\$ 149.41	83
Candy and chewing gum	\$ 381,766	6%	\$ 92.03	80	\$ 655,458	6%	\$ 95.33	83	\$ 965,615	6%	\$ 95.23	83
Sugar	\$ 67,251	1%	\$ 16.21	82	\$ 117,311	1%	\$ 17.06	86	\$ 171,185	1%	\$ 16.88	86
Artificial sweeteners	\$ 22,720	0%	\$ 5.48	84	\$ 39,269	0%	\$ 5.71	88	\$ 57,808	0%	\$ 5.70	88
Jams, preserves, other sweets	\$ 126,125	2%	\$ 30.40	79	\$ 217,974	2%	\$ 31.70	83	\$ 320,426	2%	\$ 31.60	83



Fun Facts...

Our area spends \$1.5M annually on sweets. That equals around \$150 per household on treats!

Will the next few months change that, or will it be higher than usual? 'Tis the season for sweet treats.

Upcoming Events & Business Education

Upcoming Events and Business Education

SBDC Virtual Class - State Tax Webinar

2
NOV.

Wednesday, Nov. 2, 2022
9 am

Virtual Class through SBDC
<https://secure.touchnet.com/>

SBDC - Contractor's Sales and Compensating Use Tax Workshop

16
NOV.

Wednesday, Nov. 16, 2022
10 am

SBDC Virtual Class
<https://ksbdc.ecenterdirect.com/>

SBDC - State Tax Webinar for Construction Contractors

2
NOV.

Wednesday, Nov. 2, 2022
1 pm

Virtual Class through SBDC
<https://secure.touchnet.com/>

SBDC - Sales & Compensating Use Tax Workshop

16
NOV.

Wednesday, Nov. 16, 2022
1 pm

SBDC Virtual Class
<https://ksbdc.ecenterdirect.com/>

SBDC - Kansas Sales and Compensating Use for Construction Contractors

15
NOV.

Tuesday, Nov. 15, 2022
9 am

SBDC class through JCCC - \$15 fee
<https://secure.touchnet.com/>

SBDC class - Trademark & Copyright Basics

17
NOV.

Thursday, Oct. 20, 2022
1:30 pm

SBDC Class through JCCC - \$30
<https://ce.jccc.edu/course>

SBDC - Kansas Retail Sales and Compensating Use Tax

15
NOV.

Tuesday, Nov. 15, 2022
1 pm

SBDC class through JCCC - \$20
<https://ce.jccc.edu/>

Fridays on Forest

25
NOV.

Friday, Nov. 25, 2022
5:00pm-9:00pm

Forest Ave. between Main and William:
<https://www.gbenedinc.com/gbalive>

**Thank
you for
Following
Along
on our
Journey!**

As we sprint to the end of 2022, we are elated with the momentum gained and plan to continue to capitalize on the current progress and continue pushing forward on many ground breaking projects.

If you are interested in *investing* in GBED projects, we would be happy to keep you updated on any specific categories of interest. The upcoming project categories that we will be seeking funding for are as follows:

- * Housing
- * Childcare
- * Entrepreneurship

Anything you want to see in these newsletters that was not included? Please reach out to marketing@gbenedinc.com with your feedback.



Facebook



Instagram



LinkedIn



TikTok



Website

